

Panasonic

Panasonic®

READY

Automatic
Door

Precious Autodoor



NSXR12421RJM



* The data and pictures in this product set are for reference only. Please refer to the relevant product manuals for specific parameters.
* The specification of this product is subject to change without prior notice.

Panasonic Manufacturing (Beijing) Co., Ltd.



Enterprise Website



Gated WeChat Official Account

Dealer Contact Information :

Office Address: No. 1 Tongji North Road, Beijing Economic and Technological Development Zone, Beijing,
China Office Phone: 010-87858585
Fax: 010-87858642
Service Hotline: 400-810-4611
Enterprise Website: <http://pmbj.panasonic.cn>
Enterprise Blog: <http://blog.sina.com.cn/pmbj>
Enterprise Weibo: <http://e.weibo.com/pmbj>

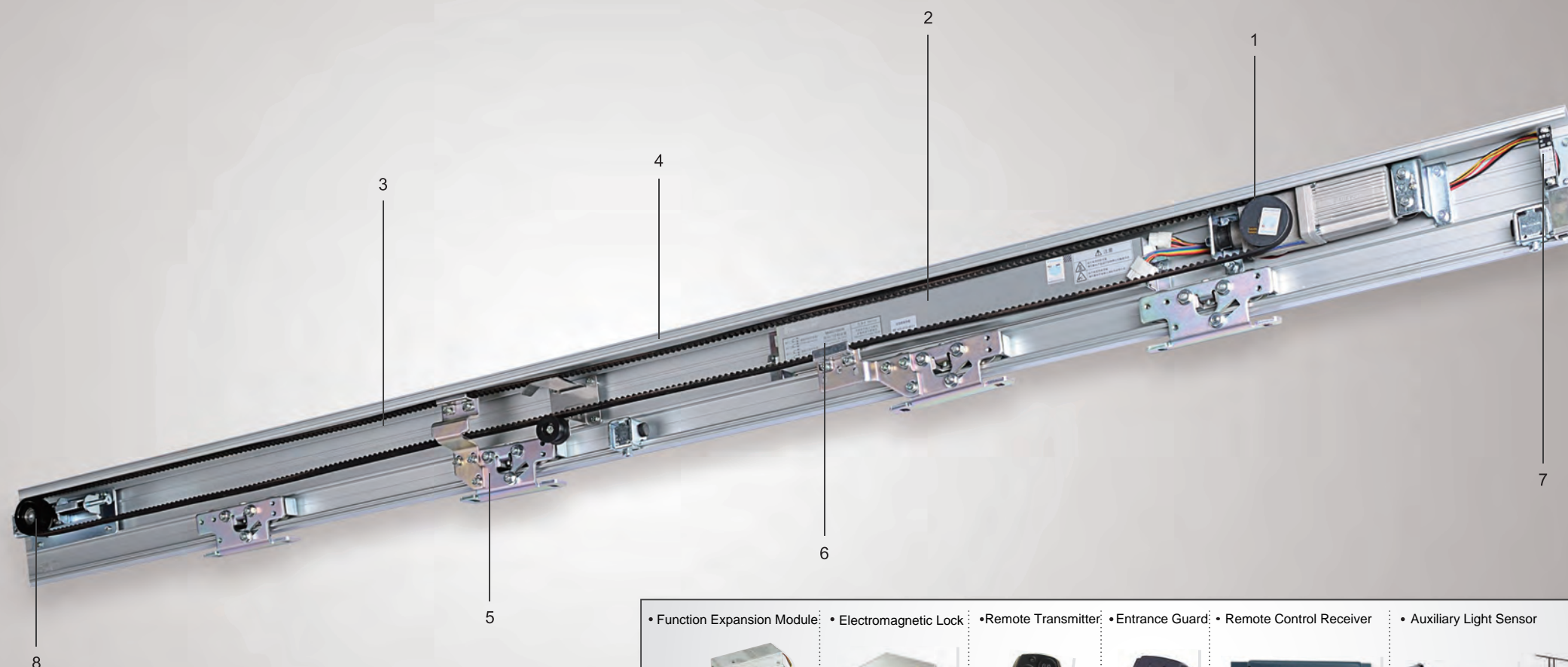
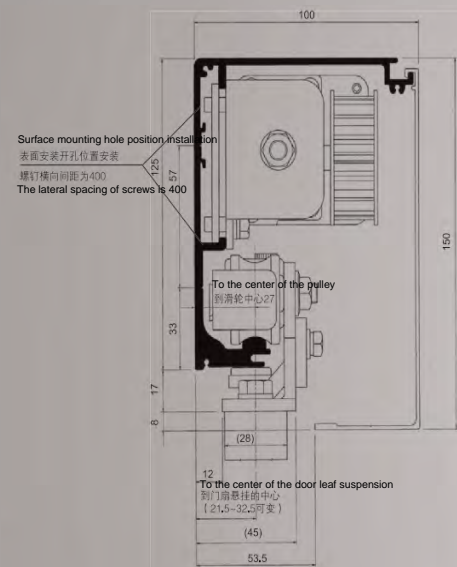
AD-PYM-002A © All rights reserved, no translation allowed

2016.06

Components

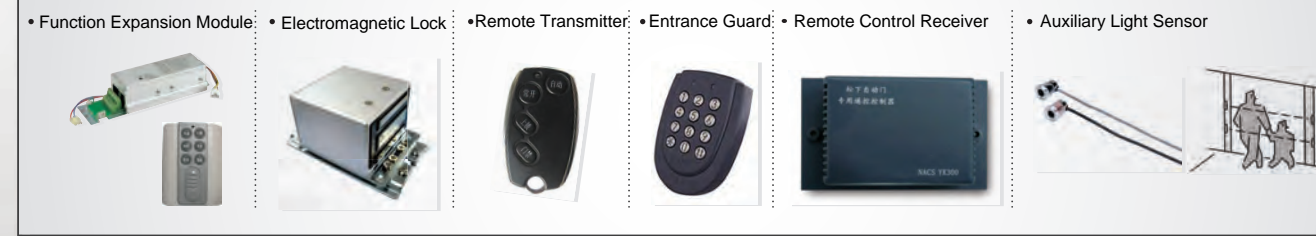
- 1 Motor 2 Controller 3 Track 4 Belt
5 Hanger 6 Belt Fixing Device 7 Terminal Block 8 Driven Wheel Device

[Track Section] READY 120/150 Surface Mount Type



High Security | Easy to Install | Stable and Reliable | Rich Functions

- The new technology motor is used to improve the motor structure, optimize the design of the reduction gear and further reduce noise.
- The control program is optimized to match the new motor for smooth operation.
- The high-strength polyurethane pulley is used for lower rolling friction noise.
- The newly developed sensor is adopt.



Silent Design

DC brushless motor is small in size, high in power and low in running noise. Integrated motor, the motor and the gear box are integrated, which avoids the vibration and noise caused by the need for small leather transmission. The worm gear transmission mode is adopted, which has high transmission efficiency, large output torque and low noise. Polyurethane pulley has the characteristics of light weight, good shock absorption, aging resistance and low temperature resistance, which effectively reduces the rolling friction noise during operation.

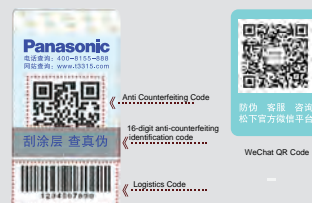
Controller Module

Receiving detection signals from sensors or other signal switches, driving the motor and controlling the door body to move in a proper way. China-oriented design, no need to use transformers. Add two sets of built-in auxiliary light sensor interfaces and auxiliary function interfaces to further improve product safety and versatility.

Motor Module

The DC brushless motor with small volume and high power is used, and the high-speed gearbox system with high transmission efficiency and low noise is used to slow down, and then the belt is driven. There is a safety device inside, which can run trouble-free for a long time even if it is opened and closed frequently. Motor drive pulley is made of metal, without maintenance.

Security Design



• Query Mmethod

- Telephone Inquiry**
Call 400-8155-888 and enter the 16-digit identification code of the layer coverage to check the authenticity.
- Website Query**
Log in to www.t3315.com and enter the identification code to check the authenticity.

- Mobile Terminal APP Query**
The mobile APP scans the anti-counterfeiting QR code and directly checks the authenticity.
- Wechat Query**
Scan the QR code of WeChat and pay attention to the official WeChat of Panasonic Gate Control to check the authenticity.

Specifications

Flush Type	Single Opening		Double Opening		Single Opening		Double Opening	
Door Weight	Below 120kg		Below 120kg x 2 pieces		Below 150kg		Below 150kg x 2 pieces	
Door Width	DW=600~1250mm							
Installation Method	Surface Mounted	Imbedded	Surface Mounted	Imbedded	Surface Mounted	Imbedded	Surface Mounted	Imbedded
Opening Speed	14-41cm/s (remote control adjustable)		14-40cm/s (remote control adjustable)		10-41cm/s (remote control adjustable)		14-34cm/s (remote control adjustable)	
Closing Speed	10-40cm/s (remote control adjustable)		10-38cm/s (remote control adjustable)		10-39cm/s (remote control adjustable)		10-34cm/s (remote control adjustable)	
Opening Time	0 - 9 s				0 - 9 s			
Manual Opening Force During Power Failure	46N(4.7kgf)		61.7N(6.3kgf)		63.7N(6.5kgf)		89.2N(9.1kgf)	
Ambient Temperature	-20°C~ +50°C				-20°C~ +50°C			
Voltage	AC200~250V 50/60Hz				AC200~250V 50/60Hz			

• Note: Model 150 adopts load-bearing and wear-resistant hard pulley.